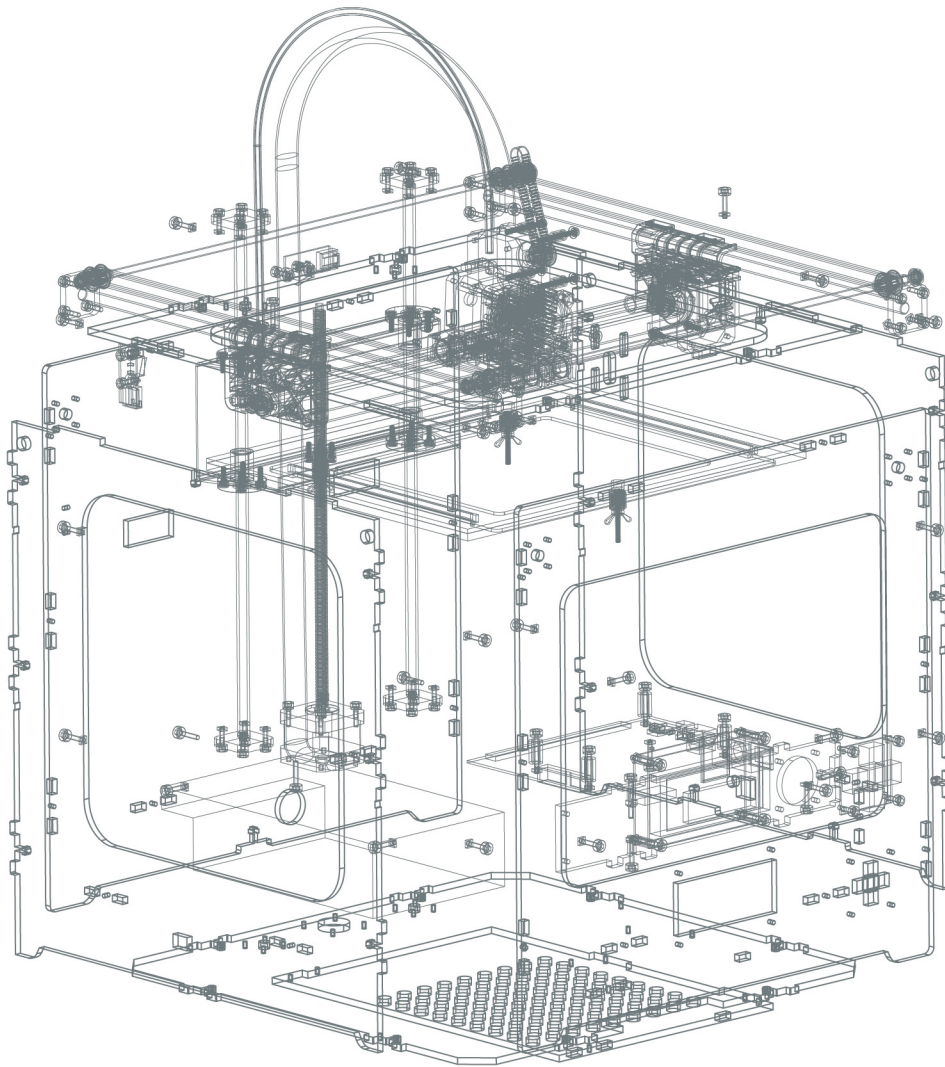
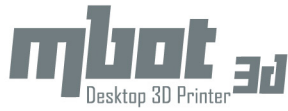


# 3D PRINTER ASSEMBLY INSTRUCTIONS



**mbot 3D**  
Desktop 3D Printer

[ Mbot Cube 打印机  
组装说明书 ]



## 欢迎您使用Mbot Cube打印机！

开箱后请根据包装箱内所附的套件部品清单对所有零件进行逐一检查，若发现缺失或受损，请您于自收货之日起7个工作日内拨打我们的技术服务电话：400 004 1266或与您购买本产品的业务代表联络

组装前请先阅读本说明书！

## Welcome. Let's get started.

Welcome to use Mbot Cube Printer

Please check all the accessories one by one in the list attached in the packing box, any missing or damage, please dial 400 004 1266 to contact our technical support or contact related sales representatives within 7 days from the day you receive our machine.

Please read this manual carefully before installation !

## 法律声明

我公司有权在我们的产品网页（[www.mbot3d.cn](http://www.mbot3d.cn)）上对本手册相关内容进行修改。

在未得到事先书面同意的情况下，任何人不得对此说明书进行修改、复印或翻译。除了为您操作打印机之用途外，未经授权的情况下使用本手册所包含的任何资料可能会违反版权法、商标法、隐私和公开法、某些通讯传播法规和条例以及其他适用的法律法规。您应自行负责您自己的行为以及你许可使用本使用手册的任何人的相关行为。

我公司保留对本手册的最终解释权。

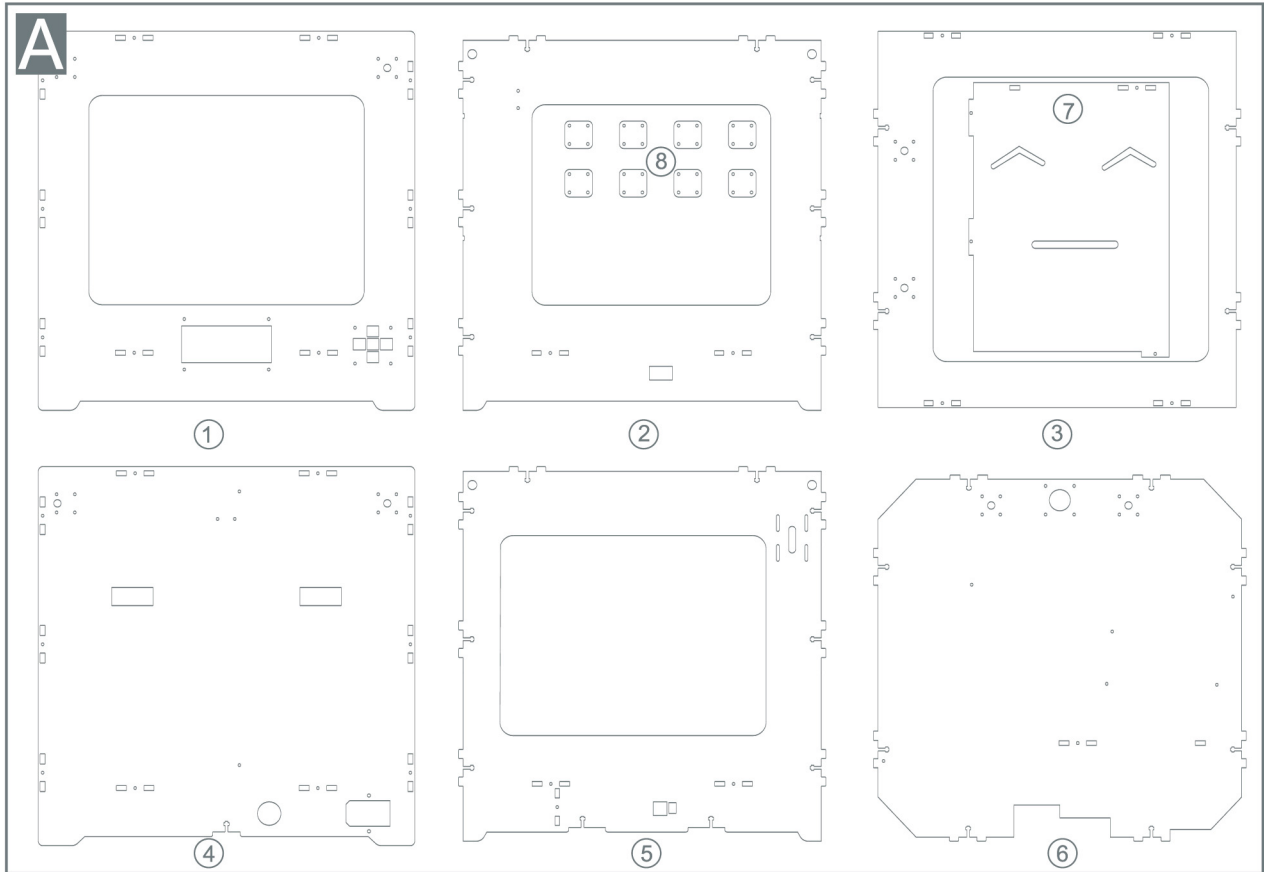
## LEGAL STATEMENT

This document is copyrighted and contains proprietary information that is the property of Magicfirm LLC. This document on our product page (<http://www.mbot3d.com/>) is subject to change without notice.

The user does not have the right to copy, reproduce, or translate this document in any way or to any media without the prior written consent of Magicfirm LLC.

Except for operating your printer, any unauthorized use of any information contained in this document may violate copyright laws, trademark laws, the laws of privacy and publicity, communications regulations and statutes, and other applicable laws and regulations. Magicfirm will not be responsible for any liability arising from or related to use this document by you and anyone with your permission.

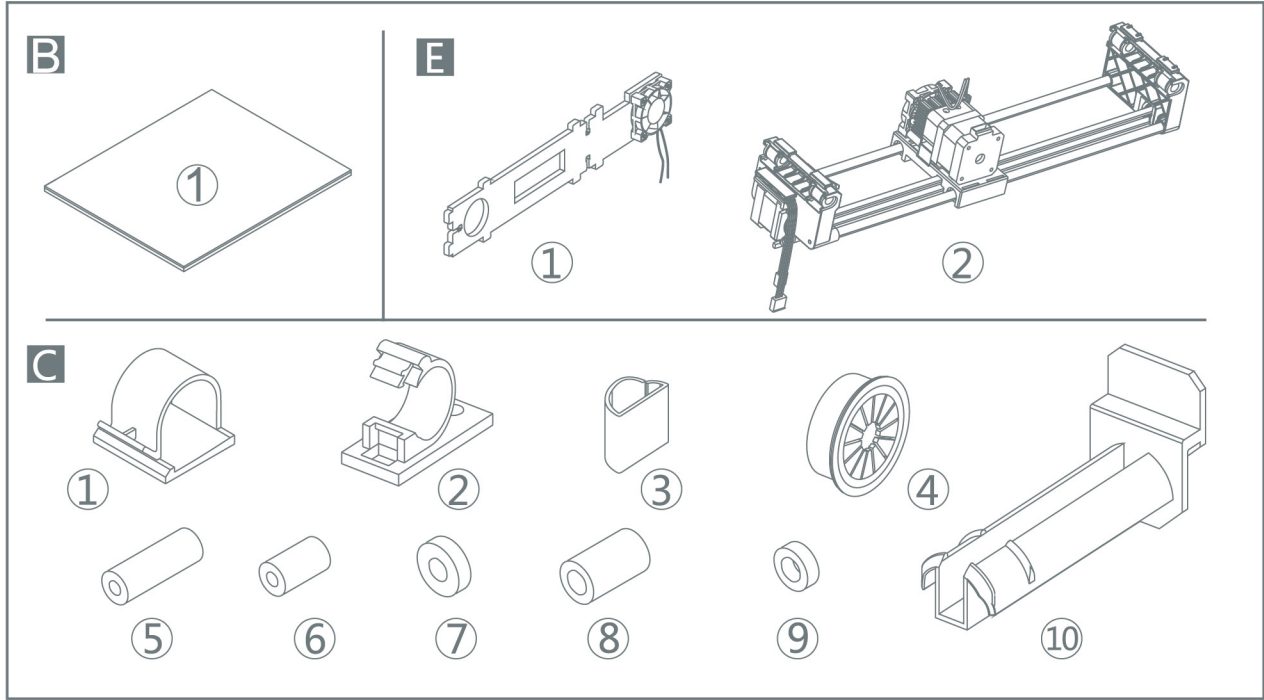
# 1 A 零件识别 PARTS



编号 NO.	品名 Name	数量 Quantity	型号/规格 (mm) Type / Size (mm)	材料 Material
切割件A Cutting Pieces(A)				
A1	面板Front panel	1	5	层板 Plywood
A2	左侧板Left panel	1	5	层板 Plywood
A3	顶板Cover Plate	1	5	层板 Plywood
A4	背板Back panel	1	5	层板 Plywood
A5	右侧板Right panel	1	5	层板 Plywood
A6	底板Bottom board	1	5	层板 Plywood
A7	底盖板Base plate	2	5	层板 Plywood
A8	光轴限位挡板limit checkboard	8	5	层板 Plywood

# B-E

零件识别  
PARTS



编号 NO.	品名 Name	数量 Quantity	型号 / 规格(mm) Type/ Size (mm)	材料 Material
-----------	------------	----------------	--------------------------------	----------------

### 切割件B Cutting Pieces(B)

B1	打印平台托盘 Build tray of the build platform	1	铁制品 Iron	
----	---	---	----------	--

### 注塑C Plastic Injection Molding ( C )

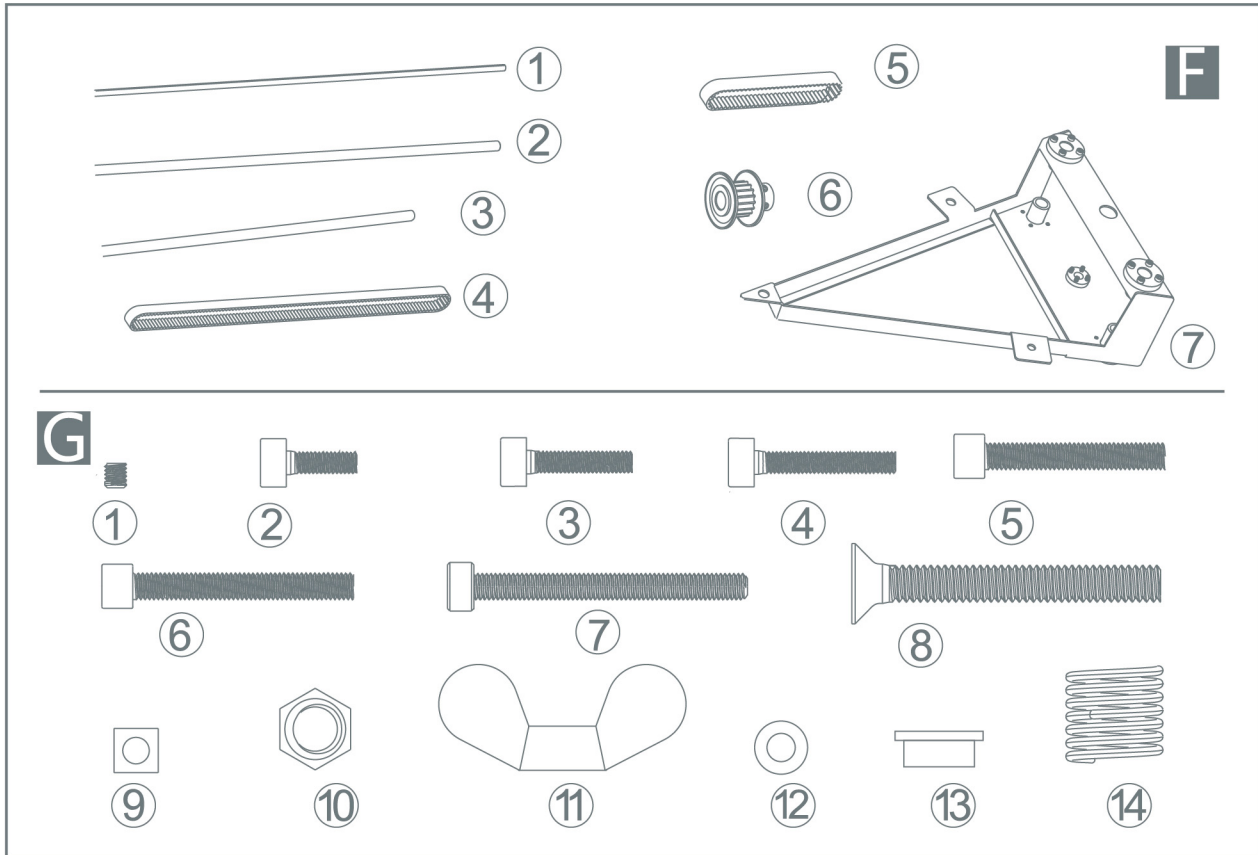
C1	线卡扣Snap	3		
C2	线卡扣Snap	2		
C3	线卡扣Snap	6		
C4	尾塞End plug	1	注塑Plastic Injection Molding	
C5	同步杆/主板尼龙垫圈Nylon spacer of the synchronous rod and motherboard	8	Φ3*7*20	
C6	液晶板垫圈Spacer of LCD panel	4	Φ3*7*12	
C7	光轴挡板垫圈Spacer of checkboard	16	Φ3*7*2	
C8	X轴固定杆X-axis traverse	1	Φ5*9*15	
C9	X轴固定杆X-axis traverse	2	Φ5*9*3	
C10	挂料架(单/双)Spool holder(Single/Dual)	1		

### 组合套件E Assembled Components(E)

E1	X轴总成X-axis assembly	1		
E2	底板风扇Fan of the bottom board	1		

# F-G

零件识别  
PARTS

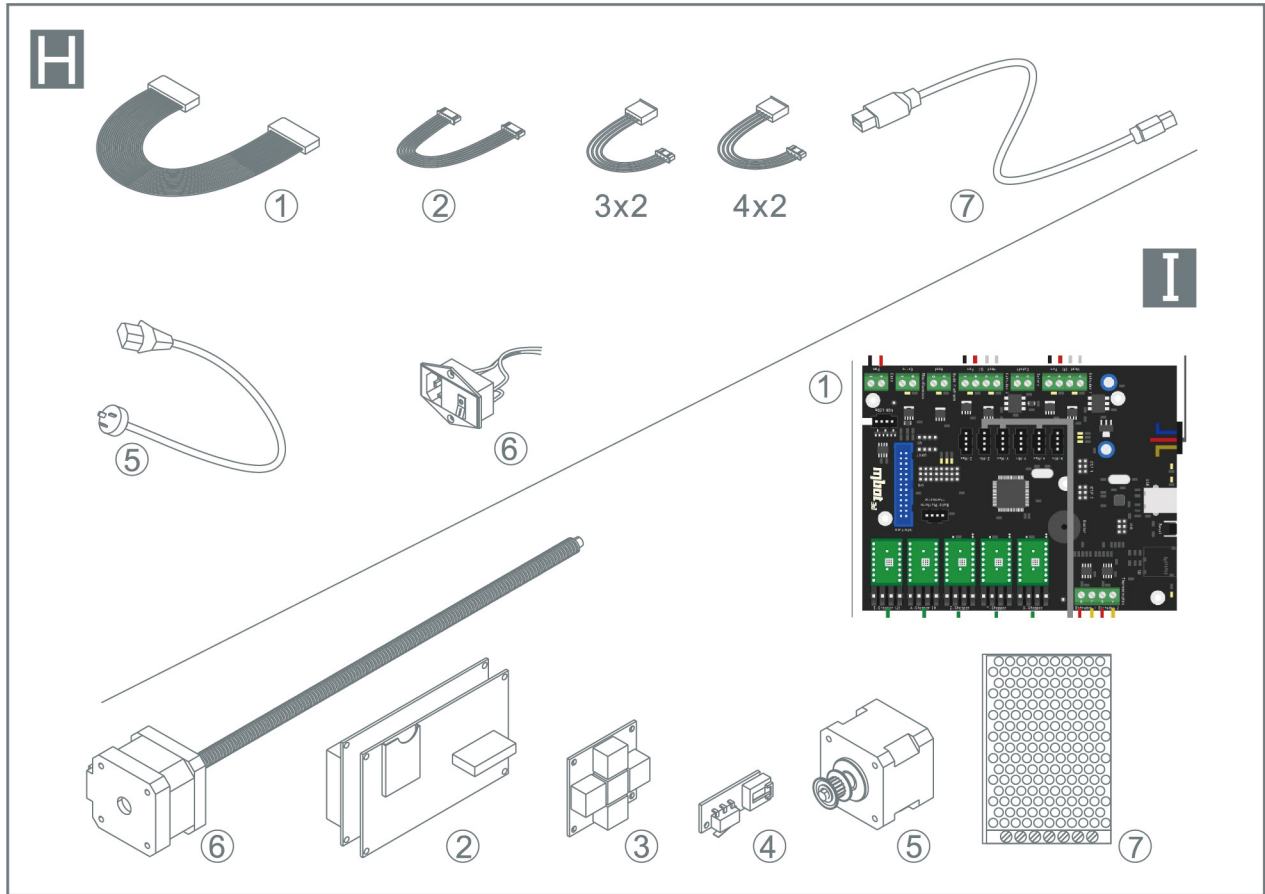


编号 NO.	品名 Name	数量 Quantity	型号/规格 (mm) Type/Size (mm)	材料 Material
<b>标准件F Standard Components(F)</b>				
F1	X轴光杆X-axis rod	2	Φ5*405	
F2	Y轴光杆Y-axis rod	2	Φ8*400	
F3	Z轴光杆Z-axis rod	2	Φ8*348	
F4	同步带Synchronous belt	2	S2M 750	
F5	同步带Synchronous belt	1	S2M 234	
F6	同步轮Synchronous wheel	5		
F7	铁质三角架Iron triangle	1		
F8	工作平台底板Build plate of the build platform	1		

<b>螺丝/轴承G Screws/Bearings(G)</b>				
G1	同步轮紧钉Fastening screw of the synchronous wheel	10	M3*3	圆柱头M3 Cylinder Head M3
G2	按键板螺丝Screw of the button control panel	7	M3*8	圆柱头M3 Cylinder Head M3
G3	小挡板螺丝Screw of the checkboard	38	M3*12	圆柱头M3 Cylinder Head M3
G4	机壳螺丝Screw of the frame	38	M3*16	圆柱头M3 Cylinder Head M3
G5	X轴限位开关螺丝Screw of X-axis limit switch	2	M3*20	圆柱头M3 Cylinder Head M3
G6	液晶板螺丝Screw of the LCD panel	4	M3*25	圆柱头M3 Cylinder Head M3
G7	Y轴步进电机螺丝Screw of the Y-axis stepping motor	8	M3*30	圆柱头M3 Cylinder Head M3
G8	打印托盘螺丝Screw of the build tray	3	M5*35	沉头M5 Countersunk Head M5
G9	方形螺母Square screw	88	M3	方形螺母M3 Square Screw M3
G10	打印平台调节螺母Adusting screw of the build platform	M5	M5	蝶形螺母M5 Butterfly Screw M5
G11	打印平台调节螺母Adusting screw of the build platform	3	M5	蝶形螺母M5 Butterfly Screw M5
G12	垫片Spacer	10	M3	
G13	传动杆轴承Drive shaft bearing	4		
G14	平台调节弹簧Spring for adjusting the build platform	3		

# H-I

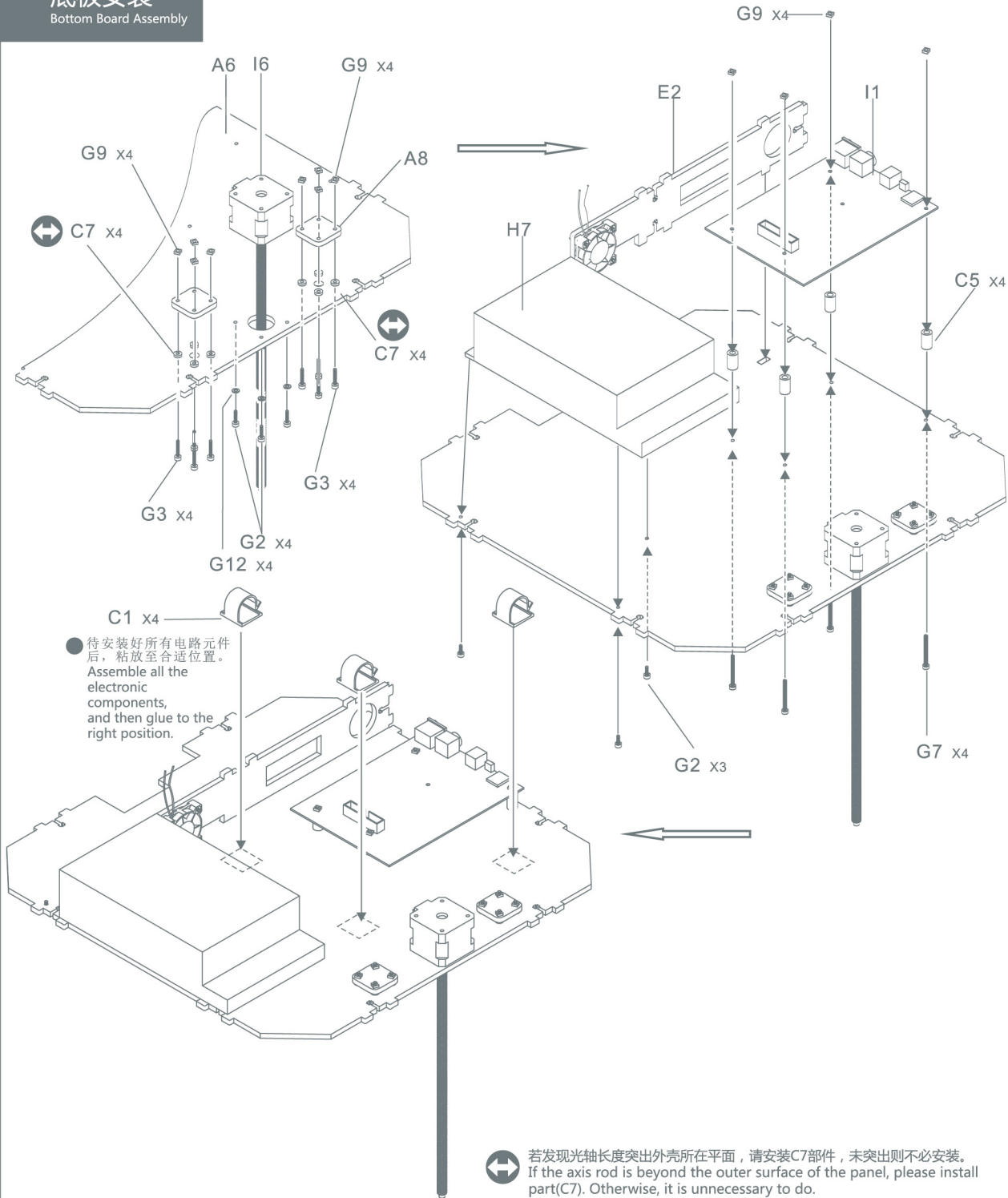
零件识别  
PARTS



编号 NO.	品名 Name	数量 Quantity	型号/规格 (mm) Type/ Size (mm)	材料 Material
<b>排线H Flat Cables(H)</b>				
H1	液晶板排线Flat cable of the LCD panel	1	300	26pin
H2	按键板连接线Cable of the button control panel	1	300	6pin
H3	限位开关信号线Signal wire of limit switch	2	700	4pin
H4	电机驱动线Motor drive cable	2	400*1/800*1	
H5	电源线Power chord	1	1400	
H6	电源插座Power socket	1	带开关Switch included	
H7	数据线USB cable	1	700	
<b>电子元件I Electronic Components(I)</b>				
I1	主板Motherboard	1		26pin
I2	液晶板LCD panel	1		6pin
I3	按键板Button control panel	1		4pin
I4	限位开关Limit switch	2		
I5	Y轴步进电机Y-axis stepping motor	1	含同步轮 Synchronous wheels included	
I6	Z轴丝杆同步电机Threaded Z-axis rod synchronous motor	1		
I7	电源Power supply	1		
<b>其它工具J Other Toos(J)</b>				
J1	束线管 Cable pipe	1	3*5*600	
J2	绕线管 Coil bobbin	1	6*200	
J3	送料套管 Feed tube	1	Φ7*500	
工具套装 Toolkit    装配说明书Assembly Instructions    使用说明书User Manual				


# 2

## 底板安装 Bottom Board Assembly



### 安装标件总汇 Standard Components List

 G2 M3x8mm  
7PCS

 G3 M3x12mm  
8PCS

 G8 M3x30mm  
4PCS

 G9 M3  
12PCS

 G12 M3  
4PCS

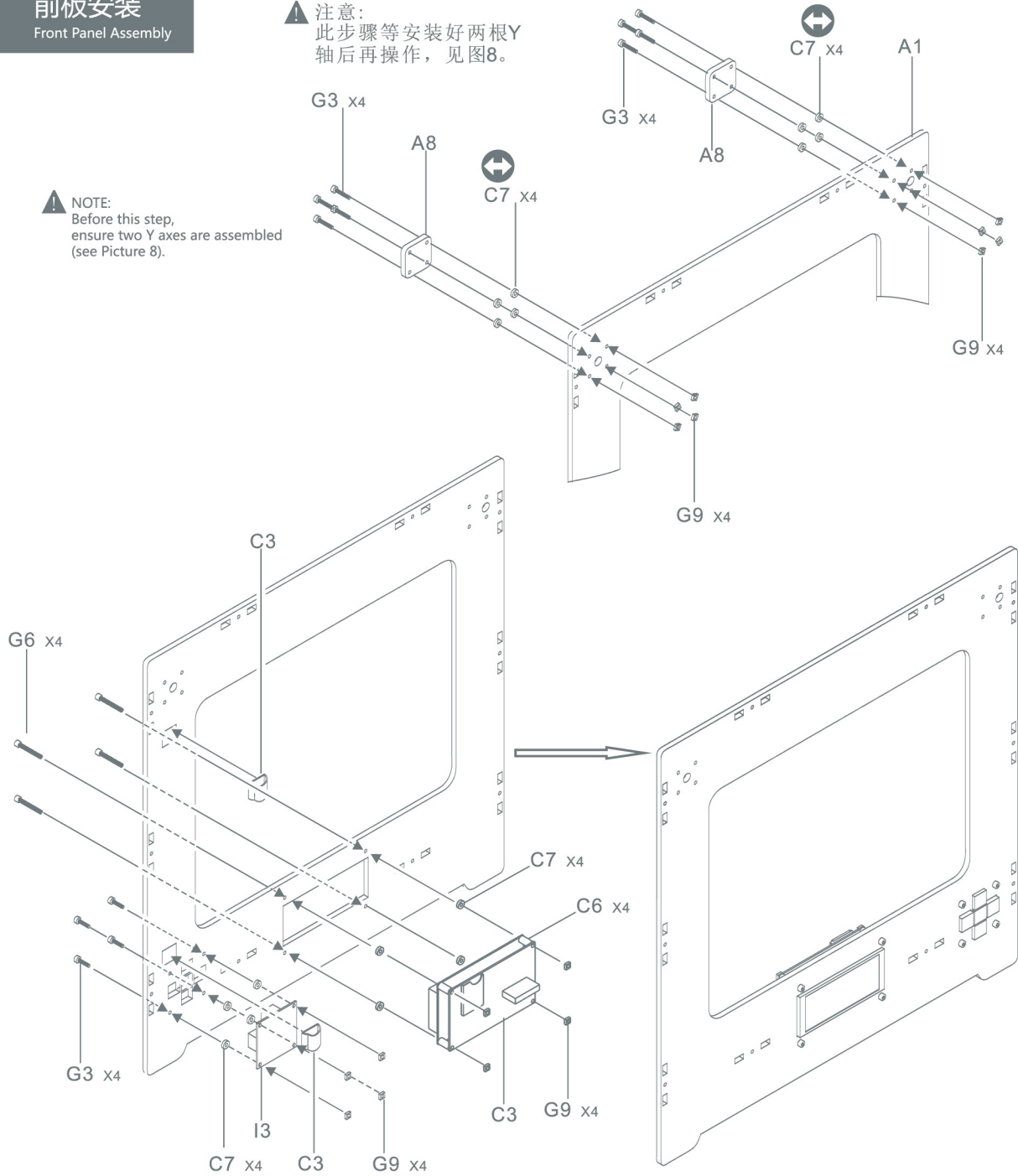
# 3

## 前板安装

Front Panel Assembly

**注意：**  
此步骤等安装好两根Y轴后再操作，见图8。

**NOTE:**  
Before this step, ensure two Y axes are assembled (see Picture 8).



若发现光轴长度突出外壳所在平面，请安装C7部件，未突出则不必安装。  
If the axis rod is beyond the outer surface of the panel, please install part(C7). Otherwise, it is unnecessary to do.

### 安装标件总汇 Standard Components List



G3 M3x12mm  
12PCS



G6 M3x25mm  
4PCS

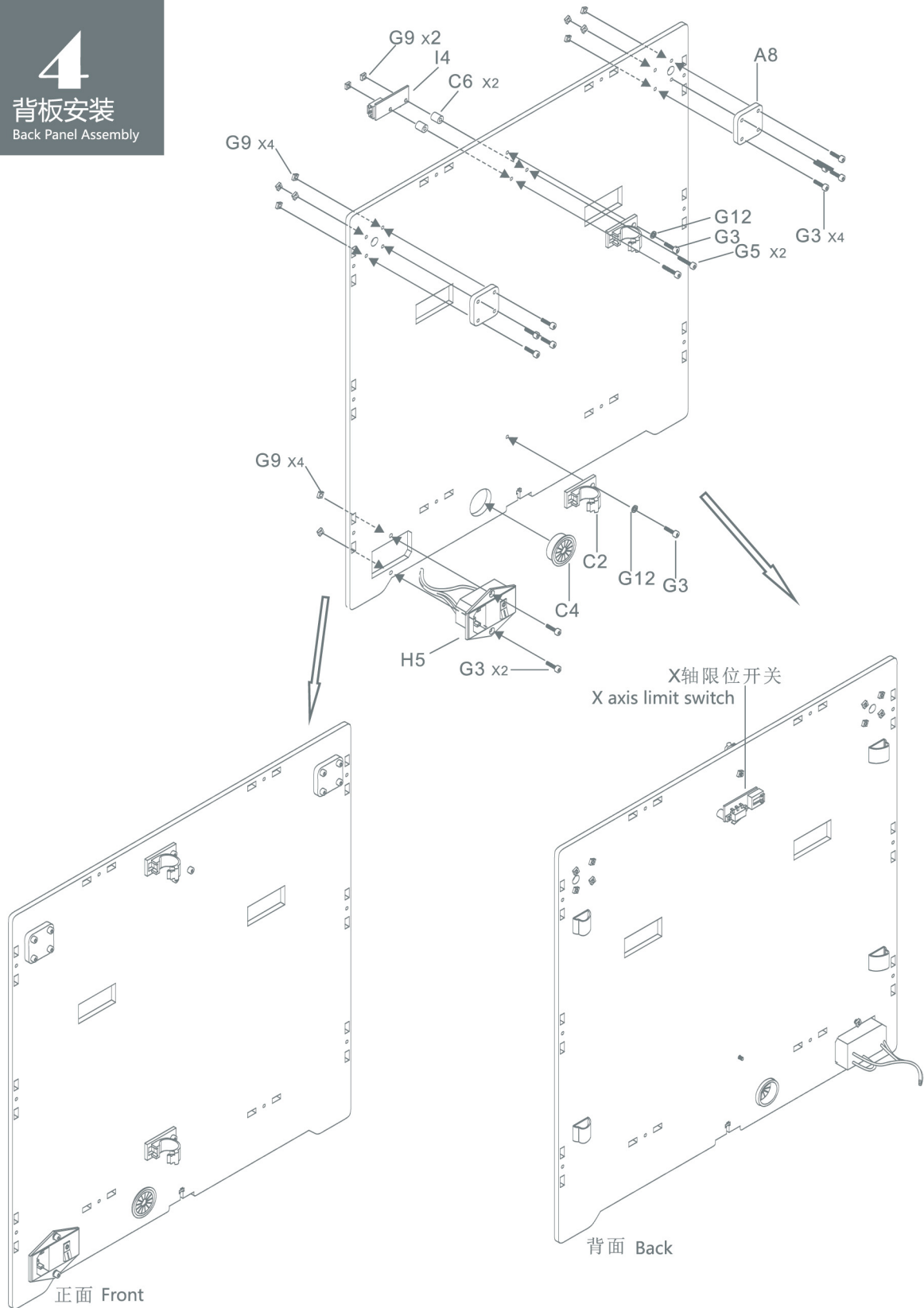


G9  
16PCS

# 4

## 背板安装

Back Panel Assembly



### 安装标件总汇 Standard Components List



G3 M3x12mm  
12PCS



G5 M3x20mm  
10PCS



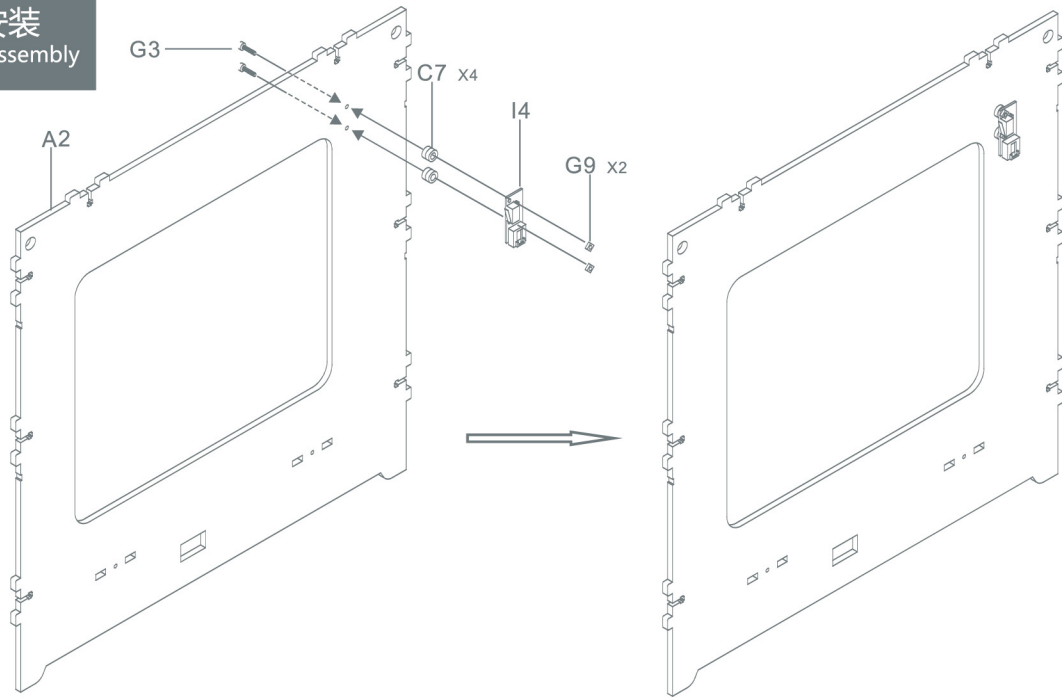
G9  
14PCS



G12 M3  
2PCS

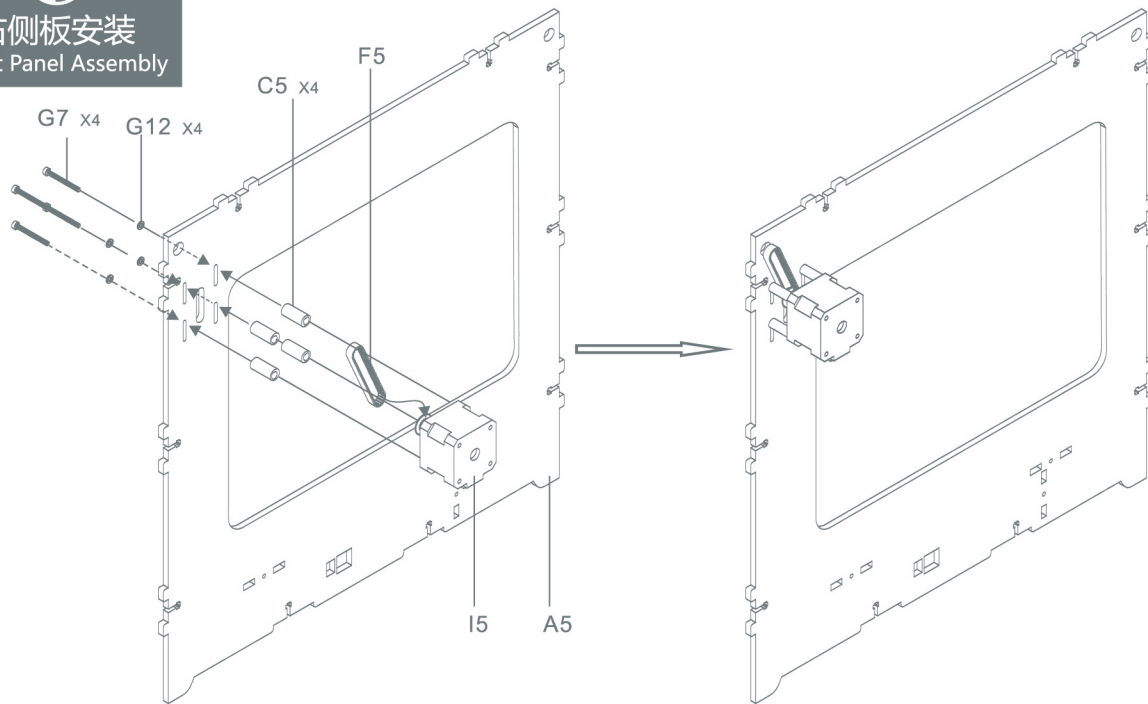
# 5

## 左侧板安装 Left Panel Assembly



# 6

## 右侧板安装 Right Panel Assembly



### 安装标件总汇 Standard Components List



G3 M3x12mm  
2PCS



G7 M3x30mm  
4PCS



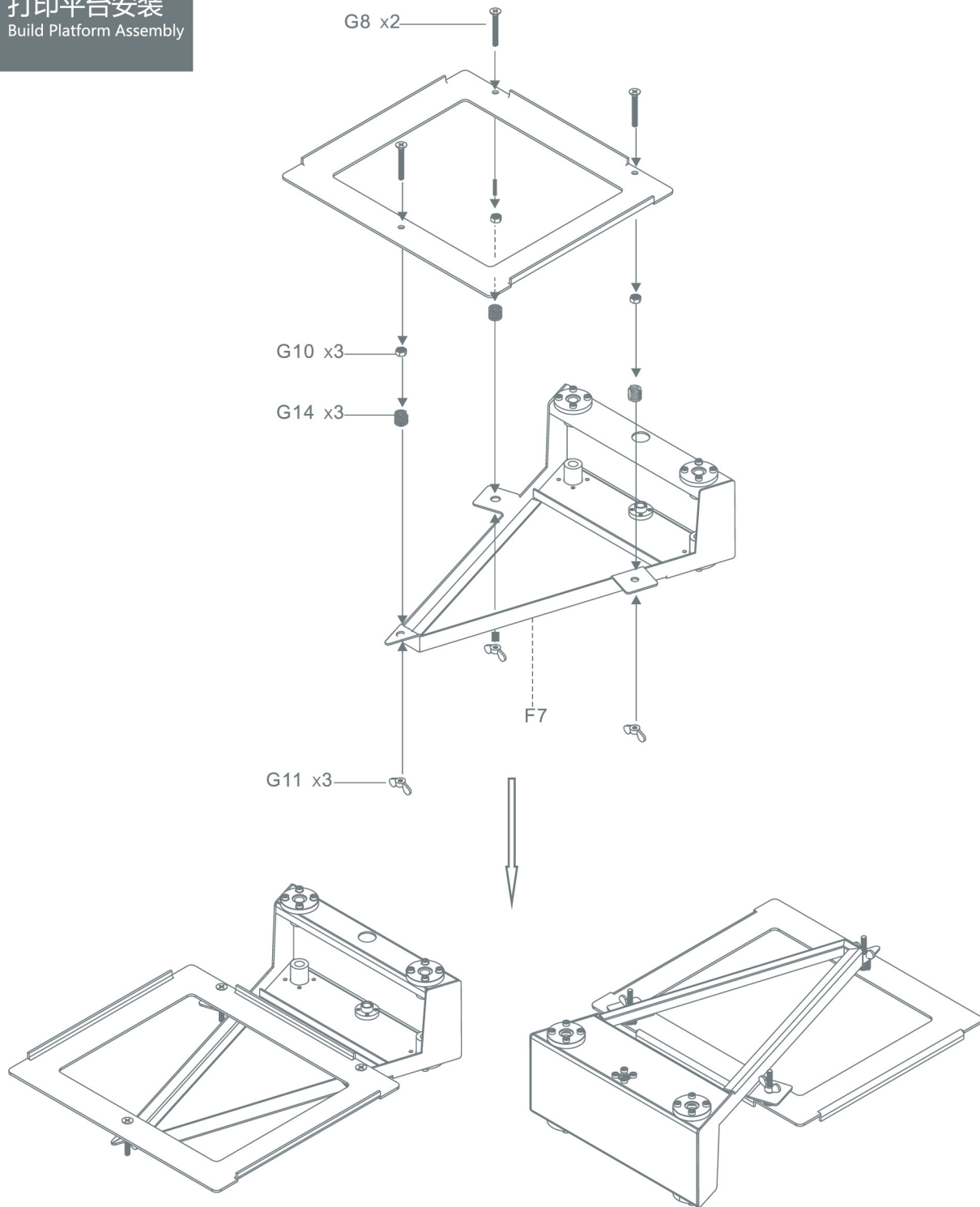
G9 M3  
2PCS



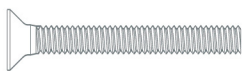
G12 M3  
4PCS

# 7

## 打印平台安装 Build Platform Assembly



### 安装标件总汇 Standard Components List



G8 M5x35mm  
3PCS



G10 M5  
3PCS



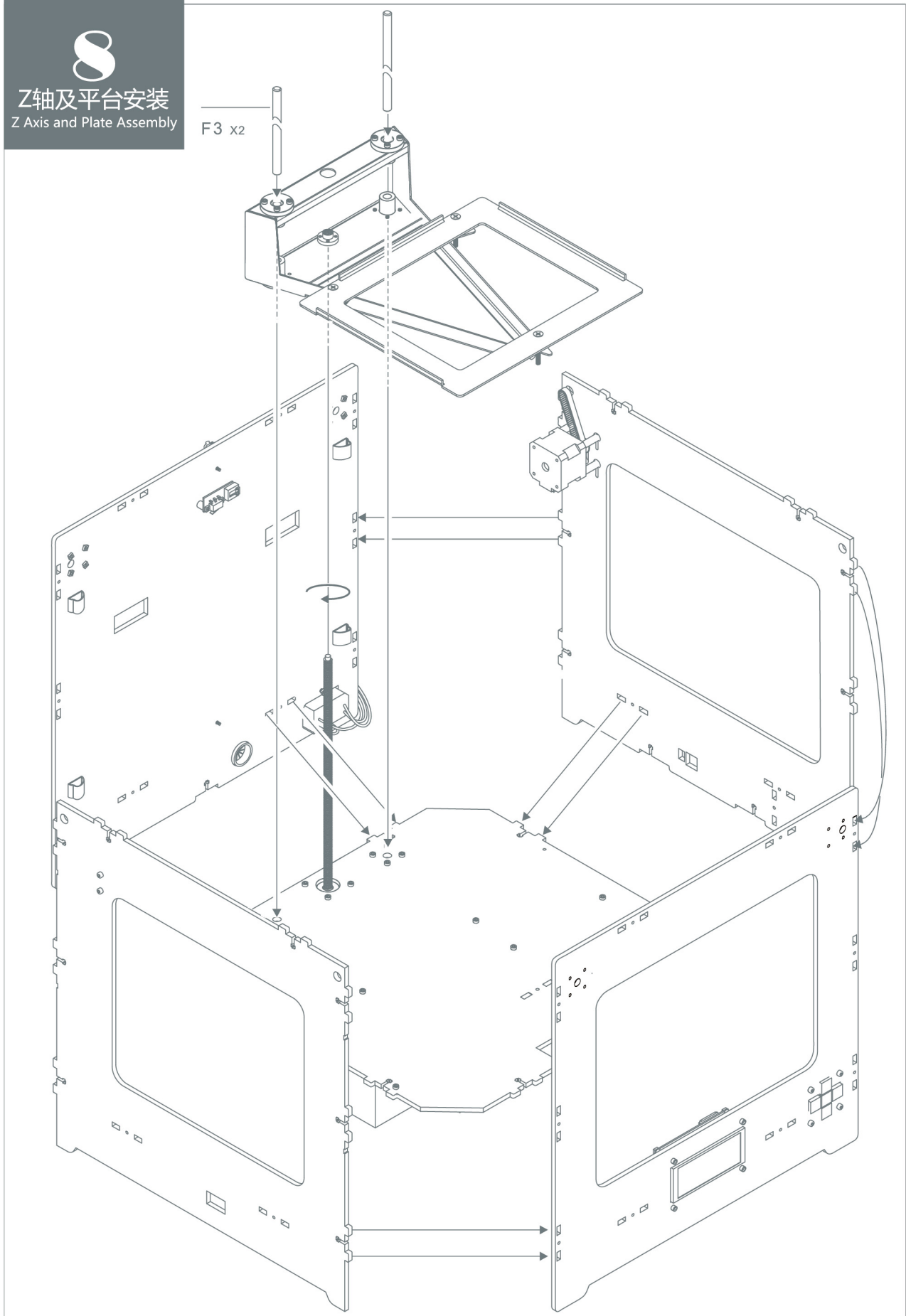
G11 M5  
3PCS



G14  
3PCS



Z轴及平台安装  
Z Axis and Plate Assembly

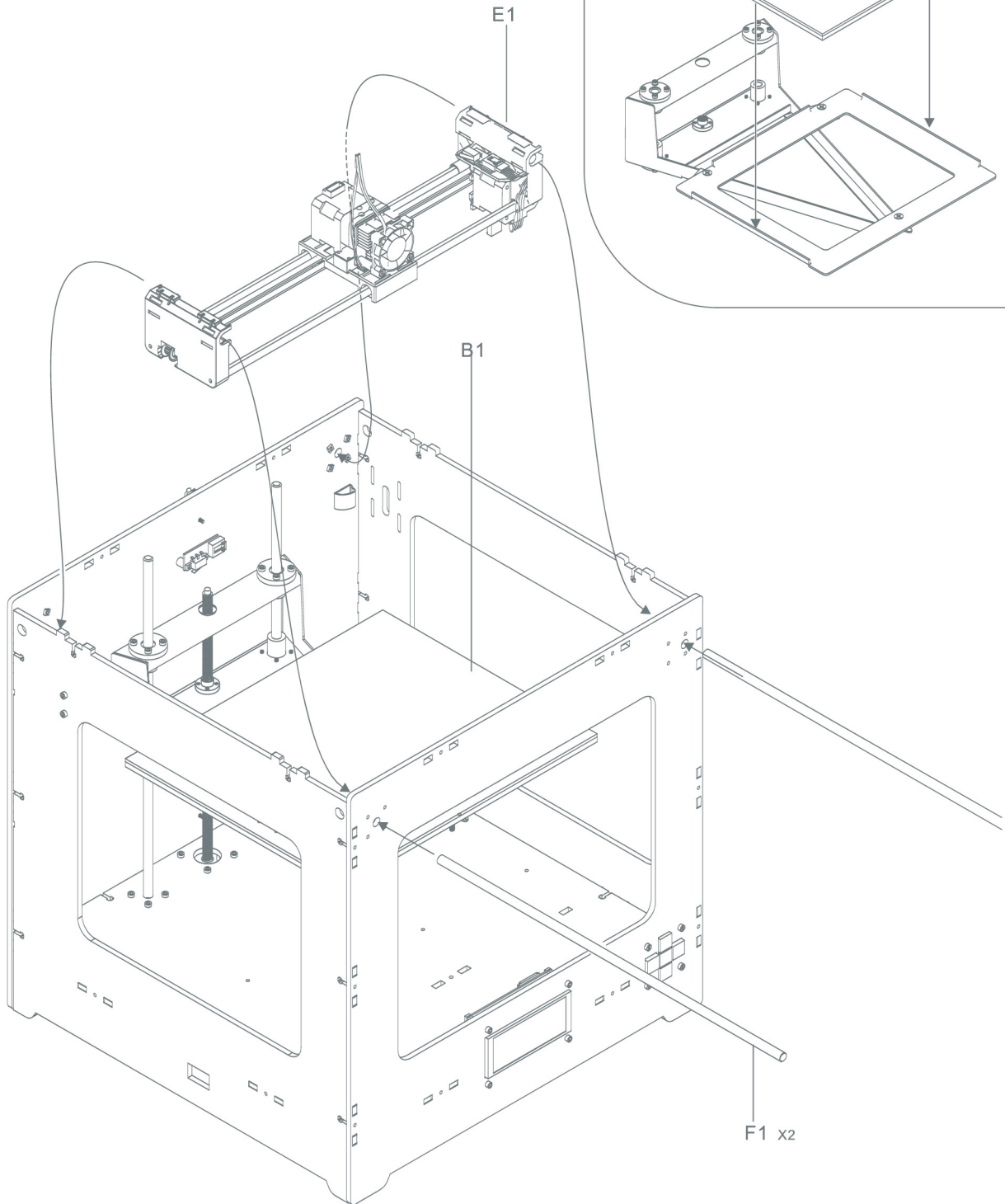




Y轴安装  
Y Axis Assembly

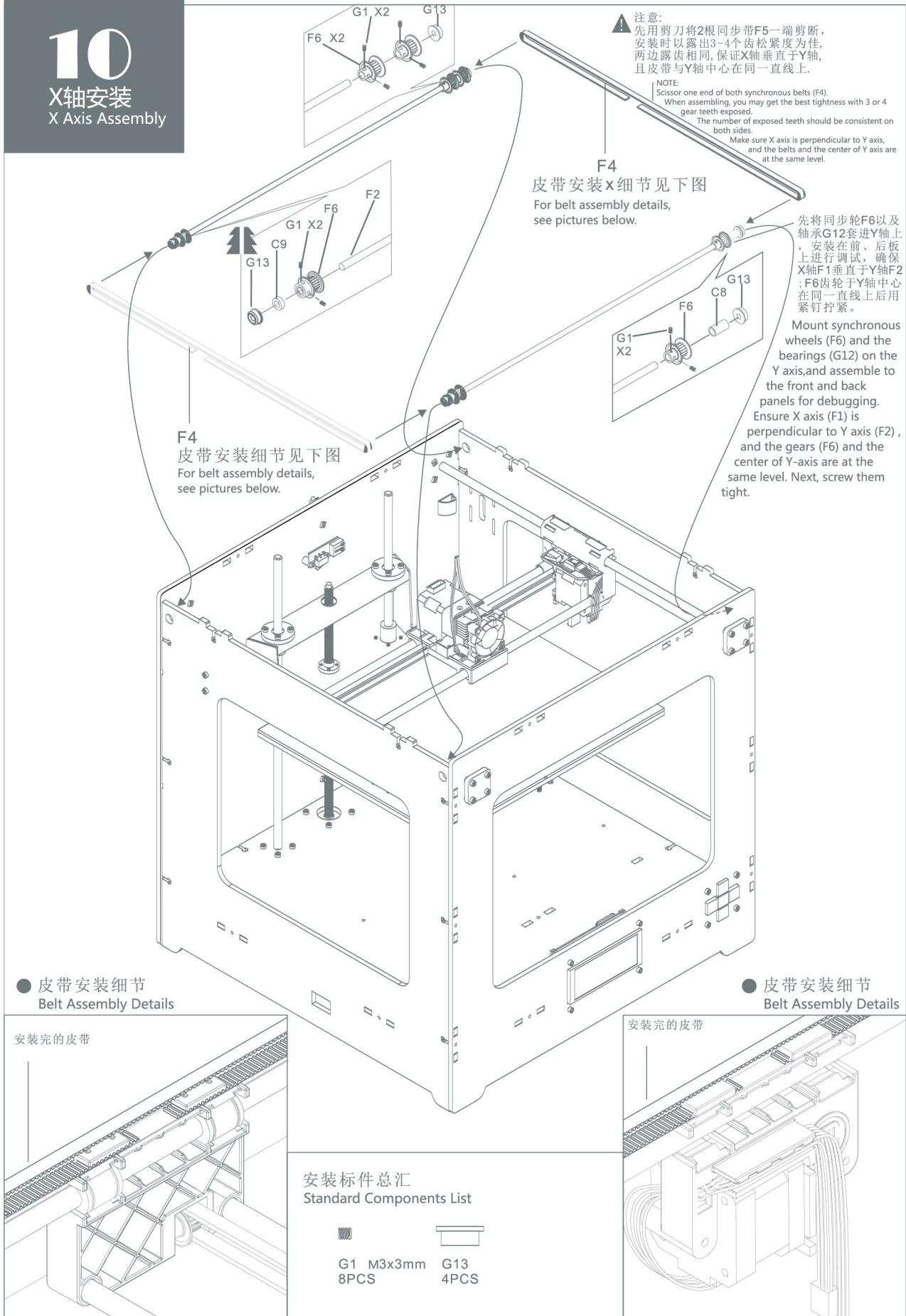
⚠ NOTE:  
Before this step, ensure all the  
components are assembled.  
Fit into three corresponding slots.

⚠ 注意:  
此步骤等安装好所有装配再操作  
插入对应3根卡槽位置



# 10

## X轴安装 X Axis Assembly



**注意:**  
先用剪刀将2根同步带F5一端剪断, 安装时以露出3-4个齿松紧度为佳, 两边露齿相同, 保证X轴垂直于Y轴, 且皮带与Y轴中心在同一直线上。

**NOTE:**  
Scissor one end of both synchronous belts (F4). When assembling, you may get the best tightness with 3 or 4 gear teeth exposed. The number of exposed teeth should be consistent on both sides. Make sure X axis is perpendicular to Y axis, and the belts and the center of Y axis are at the same level.

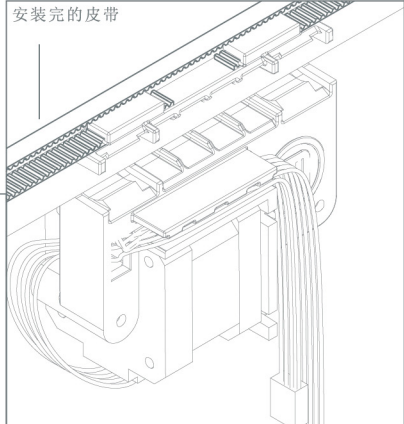
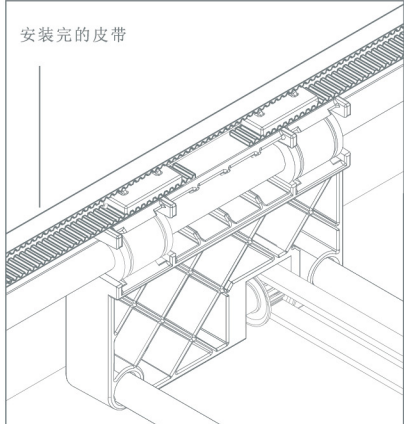
**F4**  
皮带安装x细节见下图  
For belt assembly details, see pictures below.

**F4**  
皮带安装细节见下图  
For belt assembly details, see pictures below.


先将同步轮F6以及轴承G12套进Y轴上, 安装在前、后板上进行调试, 确保X轴F1垂直于Y轴F2; F6齿轮于Y轴中心在同一直线上后用紧钉拧紧。  
Mount synchronous wheels (F6) and the bearings (G12) on the Y axis, and assemble to the front and back panels for debugging. Ensure X axis (F1) is perpendicular to Y axis (F2), and the gears (F6) and the center of Y-axis are at the same level. Next, screw them tight.

● 皮带安装细节  
Belt Assembly Details

● 皮带安装细节  
Belt Assembly Details

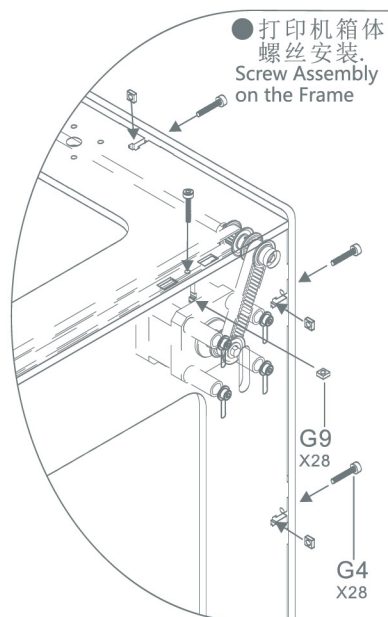
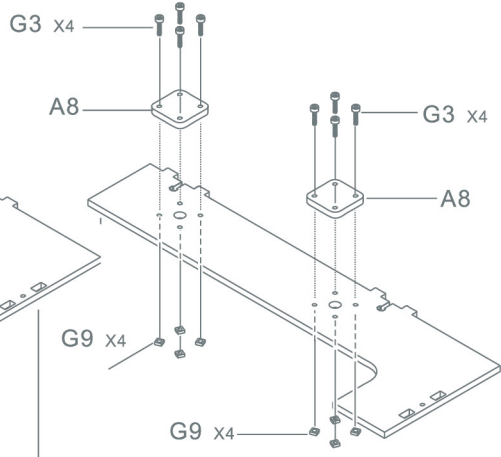
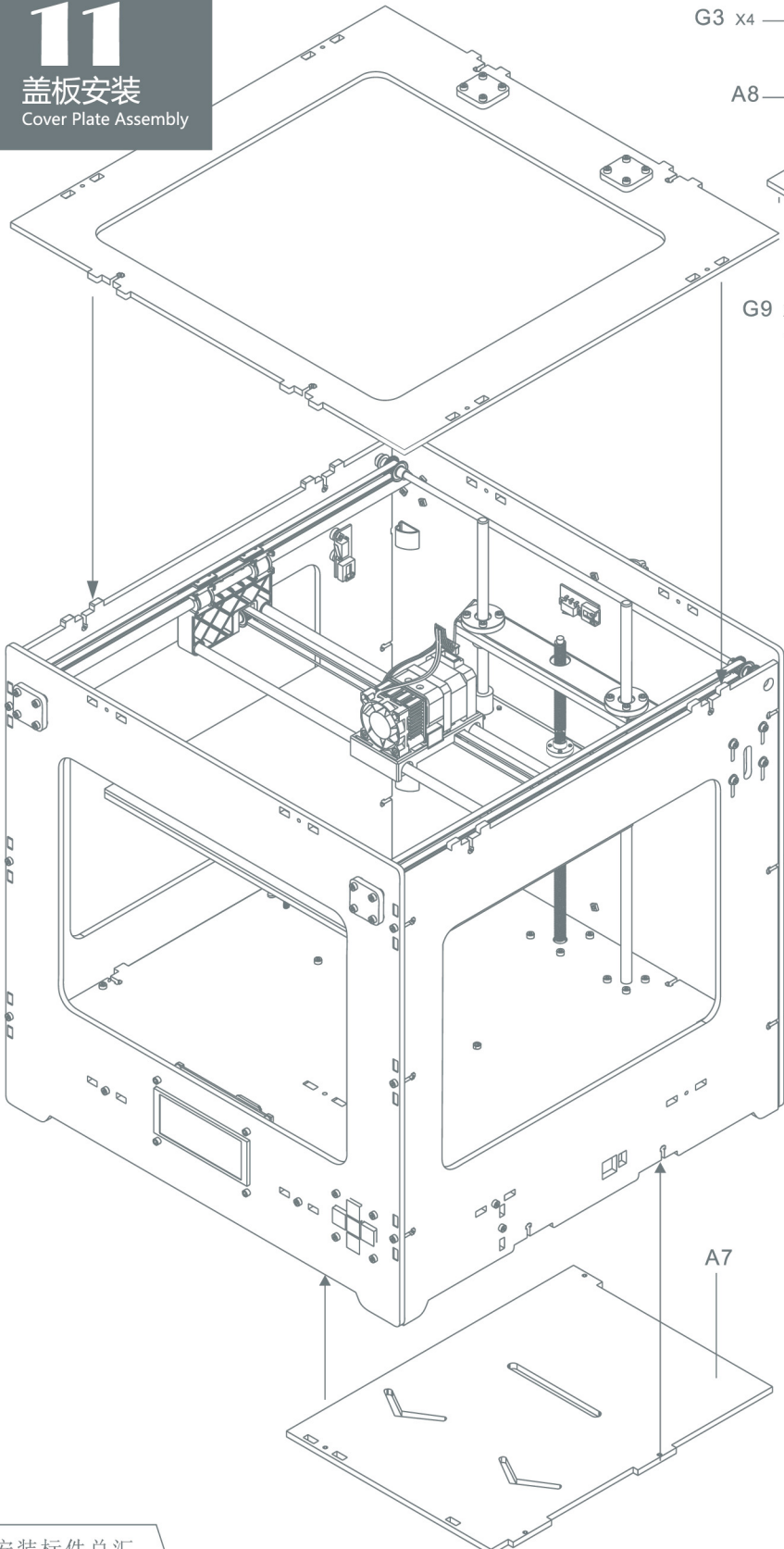


### 安装标件总汇 Standard Components List

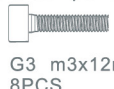
-  G1 M3x3mm 8PCS
-  G13 4PCS

# 11

## 盖板安装 Cover Plate Assembly

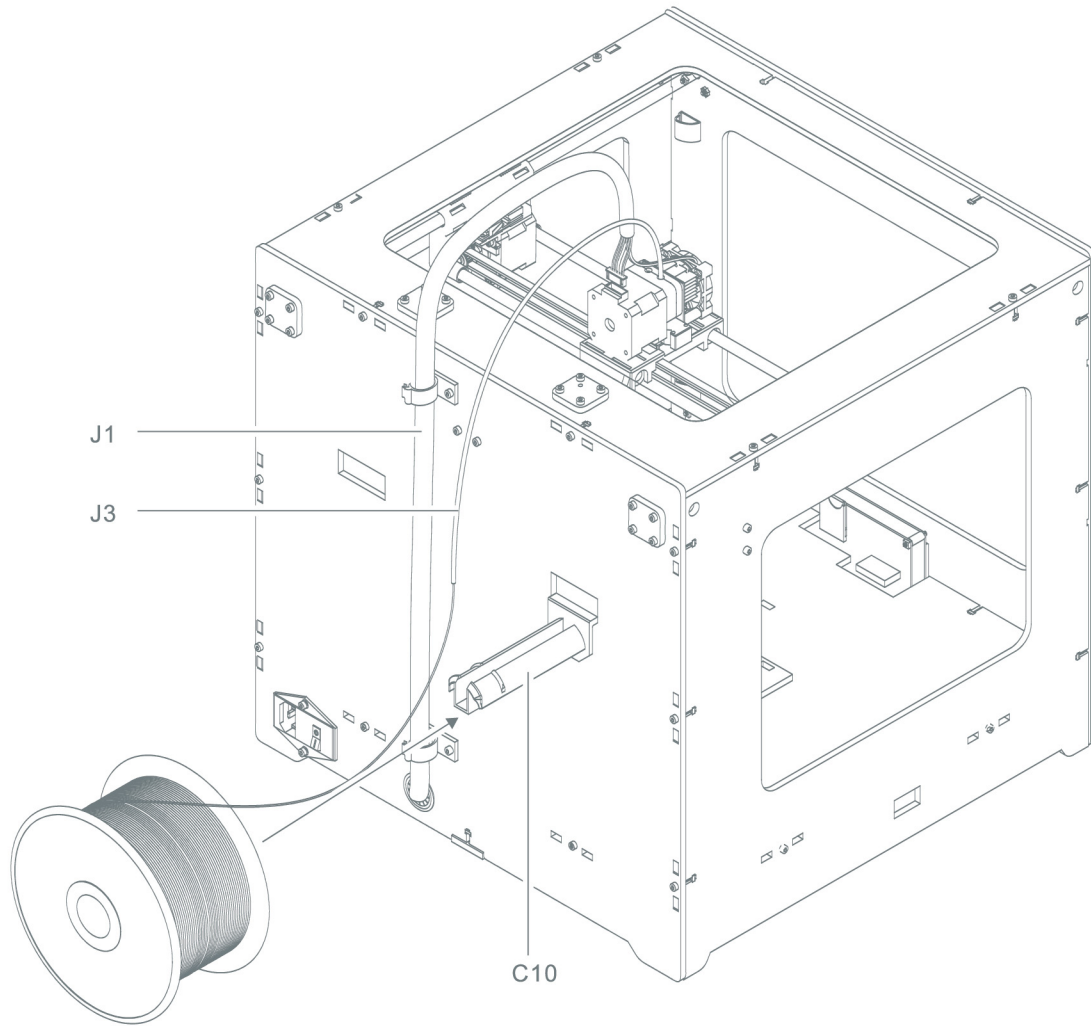


### 安装标件总汇 Standard Components List

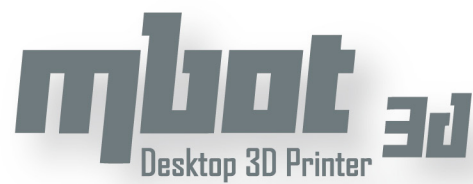


# 12

完成效果图  
Finish Assembling



⊕ 本套件耗材为选配件。  
The filament spool is optional accessory



<http://www.mbot3d.cn> 购买与技术服务电话：400 004 1266 0571-88021266  
地址：浙江省杭州市西湖区文三路90号东部软件园1号楼1227室 Email：contact@magicfirm.com  
<http://www.mbot3d.com>  
Tel: 400 004 1266 +86 571 88021266 ext 805 ( UTC+8 9:30-18:00 work time)  
Address: RM1227, BLK1, East Software park, 90 Wensan Road | Hangzhou, ZJ | 310012 | CHINA